

Strategic Master Plan Findings & Recommendations

Lisle Park District



Key Steps in Planning Process



Where Are We
TODAY?

.....



Where Are We Going
TOMORROW?

.....



How Do We Get
THERE?

.....

A group of people, including children and adults, are gathered around a campfire in a wooded area at dusk. The scene is illuminated by the warm glow of the fire, with trees and a body of water visible in the background.

We Must Go Where
The People Are

- Our Fundamental Community Input Philosophy

Community Engagement

Public Input Summary

1,000 NEARLY PARTICIPANTS



PLANLISLEPARKS.COM

445

STATISTICALLY-VALID SURVEY
RESPONDENTS

1

COMMUNITY
WIDE MEETING

14

KEY LEADERS,
STAKEHOLDERS, AND
STAFF INTERVIEWS

257

ONLINE SURVEY
RESPONDENTS



NEXT PRACTICE PARTNERS

Kimley»»Horn

pros
consulting
INC



Follow Us    [Select Language](#) | 

[About](#) | [Participate](#) | [Findings](#) | [Contact](#) [Skip Navigation](#)



YOUR input needed to Plan Lisle Parks



PlanLisleParks.com



[Kimley»Horn](#)



Statistically-Valid Survey

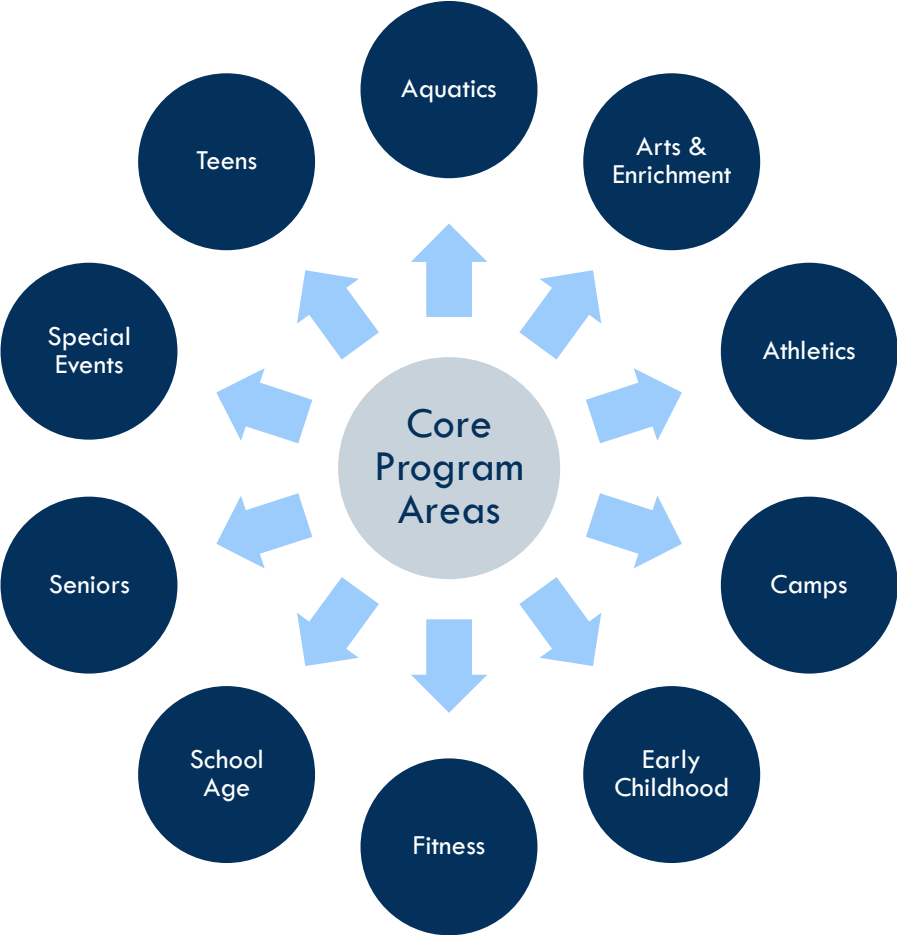
- Only scientific & defensible method to understand community needs
- Administered by mail/phone/web
- Developed in partnership with the staff
- 445 responses (goal of 350!)
- 95% level of confidence with a margin of error of +/- 4.5% currently

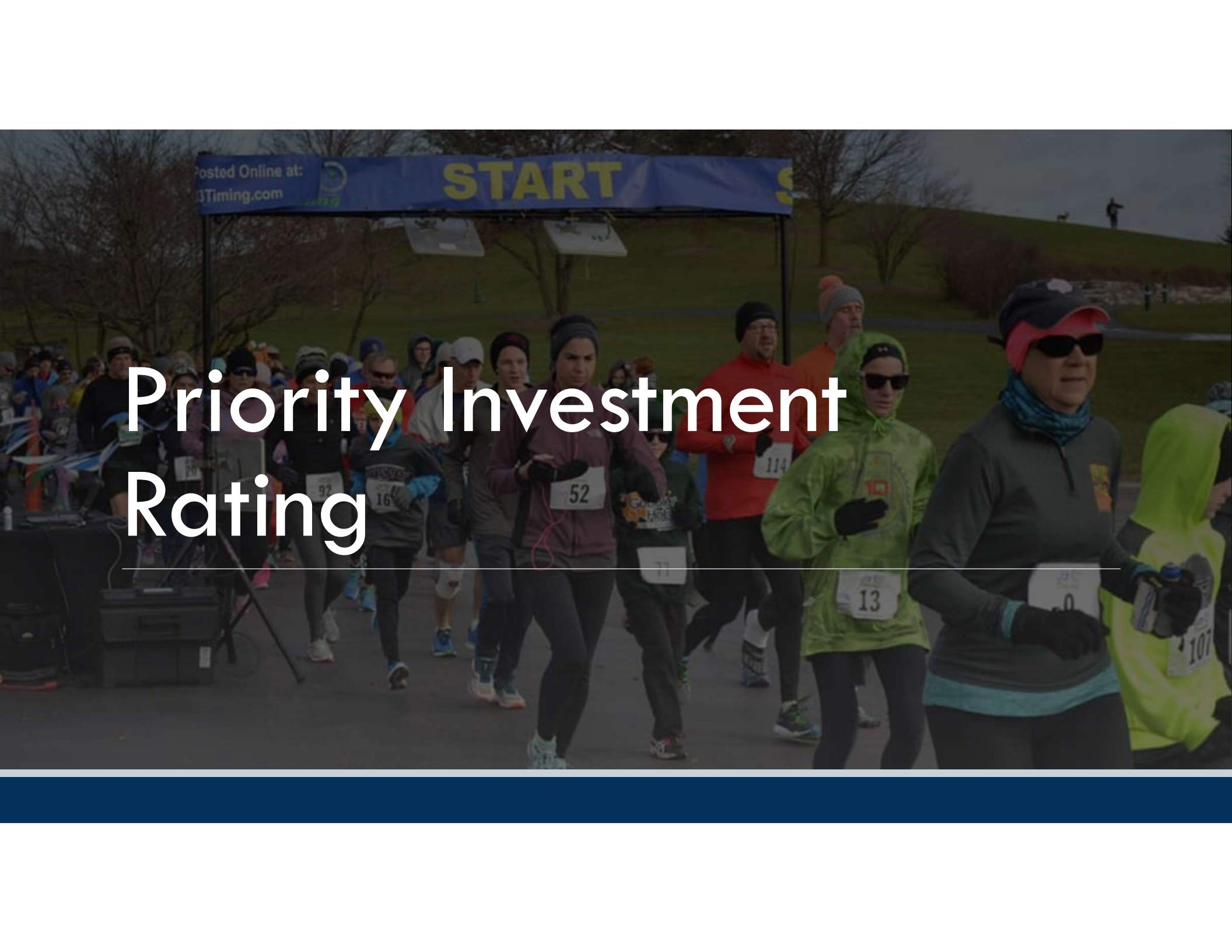


A man in a dark t-shirt, shorts, a cap, and sunglasses is crouching on a dirt field, holding a red flag football. He is also holding a blue cup. In the background, two other people are standing on a grassy area near a fence. The scene is outdoors during the day.

Program Assessment

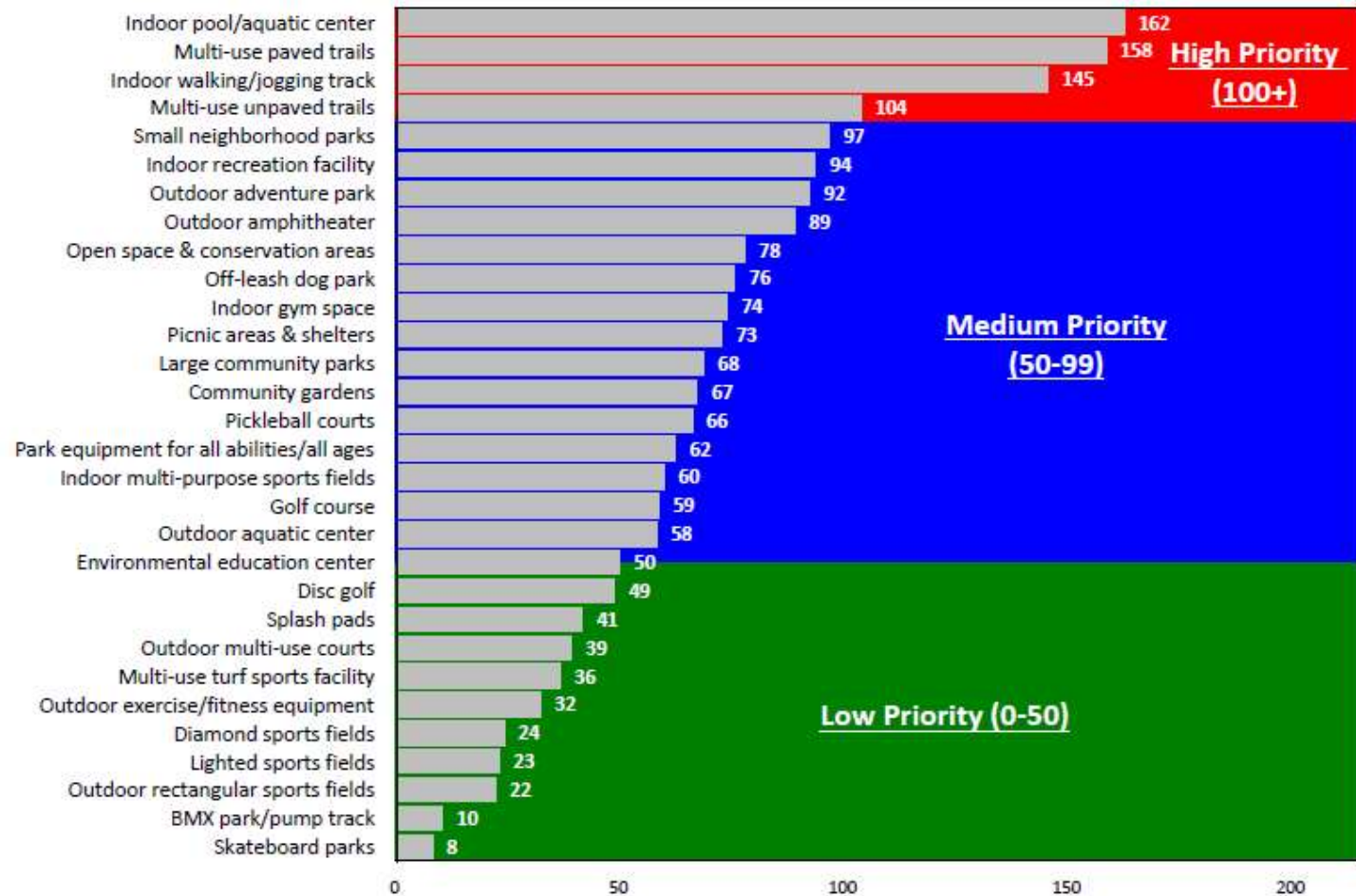
Core Program Areas



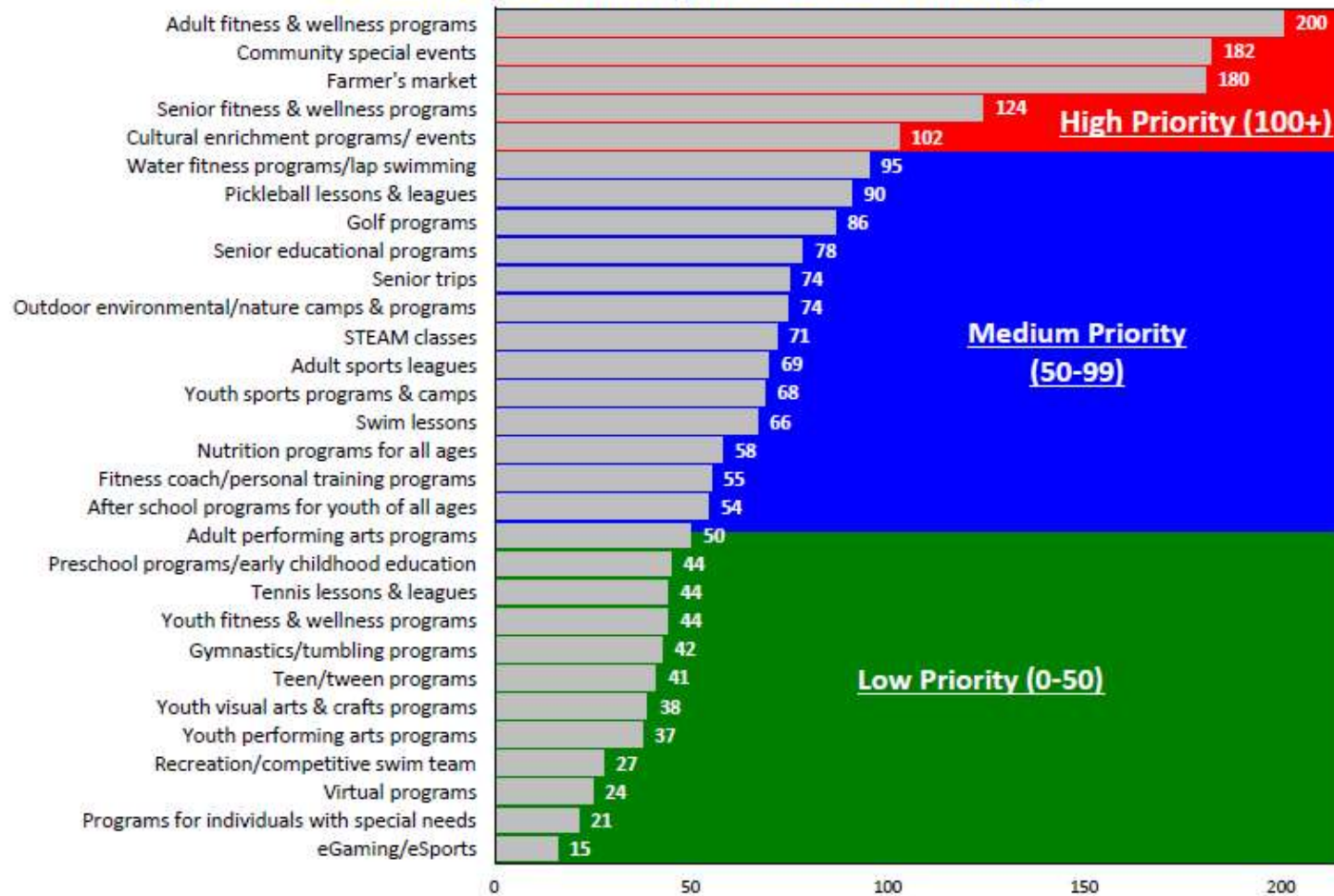


Priority Investment Rating

Top Priorities for Investment for Facility/Amenity Based on Priority Investment Rating



Top Priorities for Investment for Recreation Programs Based on the Priority Investment Rating



General Parks and Facilities Recommendations

Maintain

- Existing buildings/facilities
- Replace and/or recolor coat and stripe damaged / poor condition courts
- Repair walks and surfaces with accessibility concerns
- Replace aging playground equipment over time

Expand

- Install additional pickleball courts
- Install fenced dog park
- Install outdoor splash pad / spray park
- Install additional shelters / pavilions
- Install additional signage & wayfinding

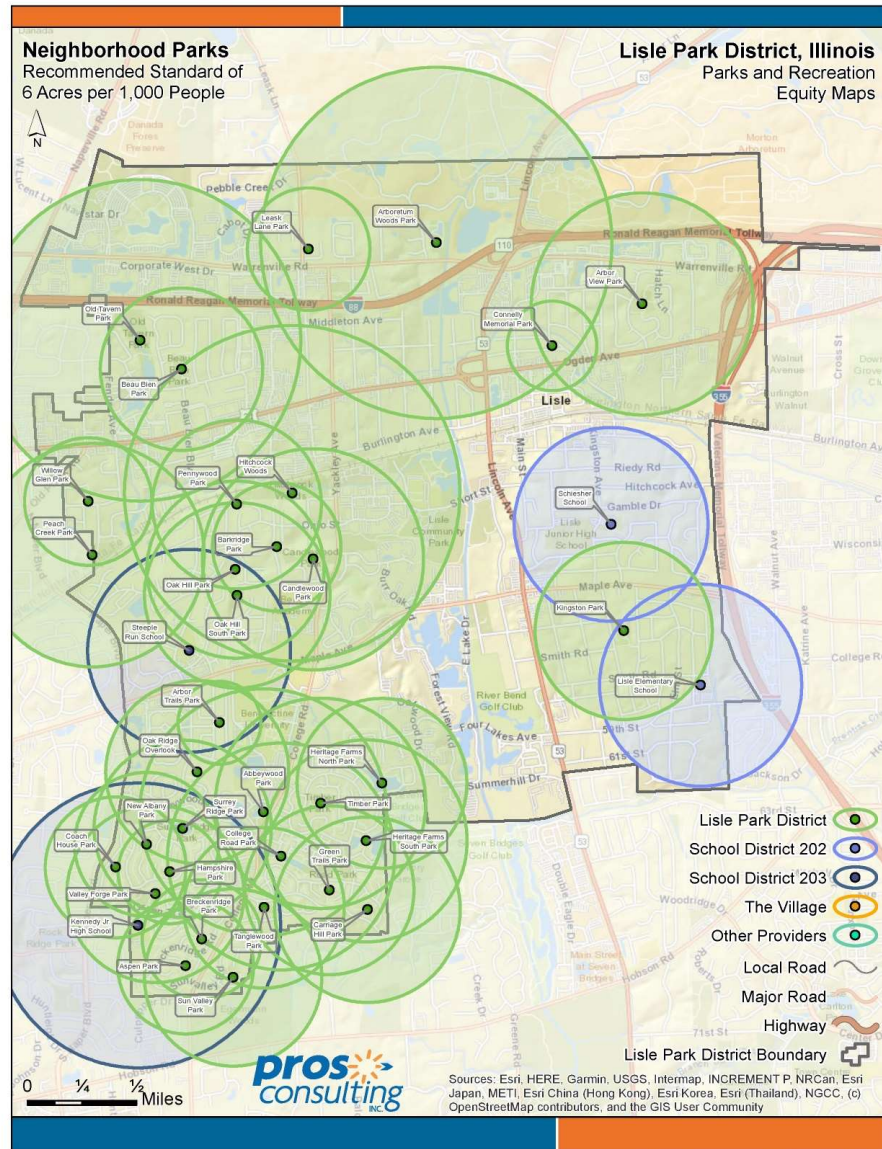




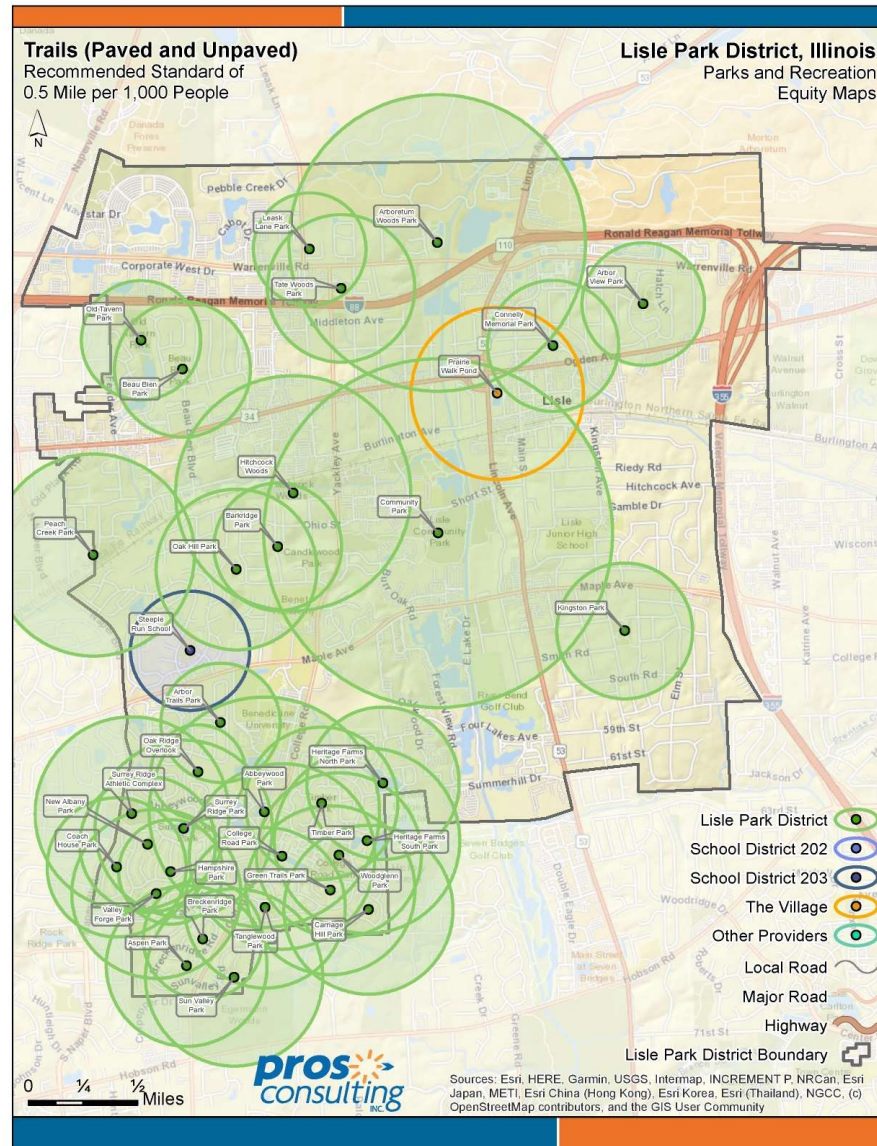
Equity Maps



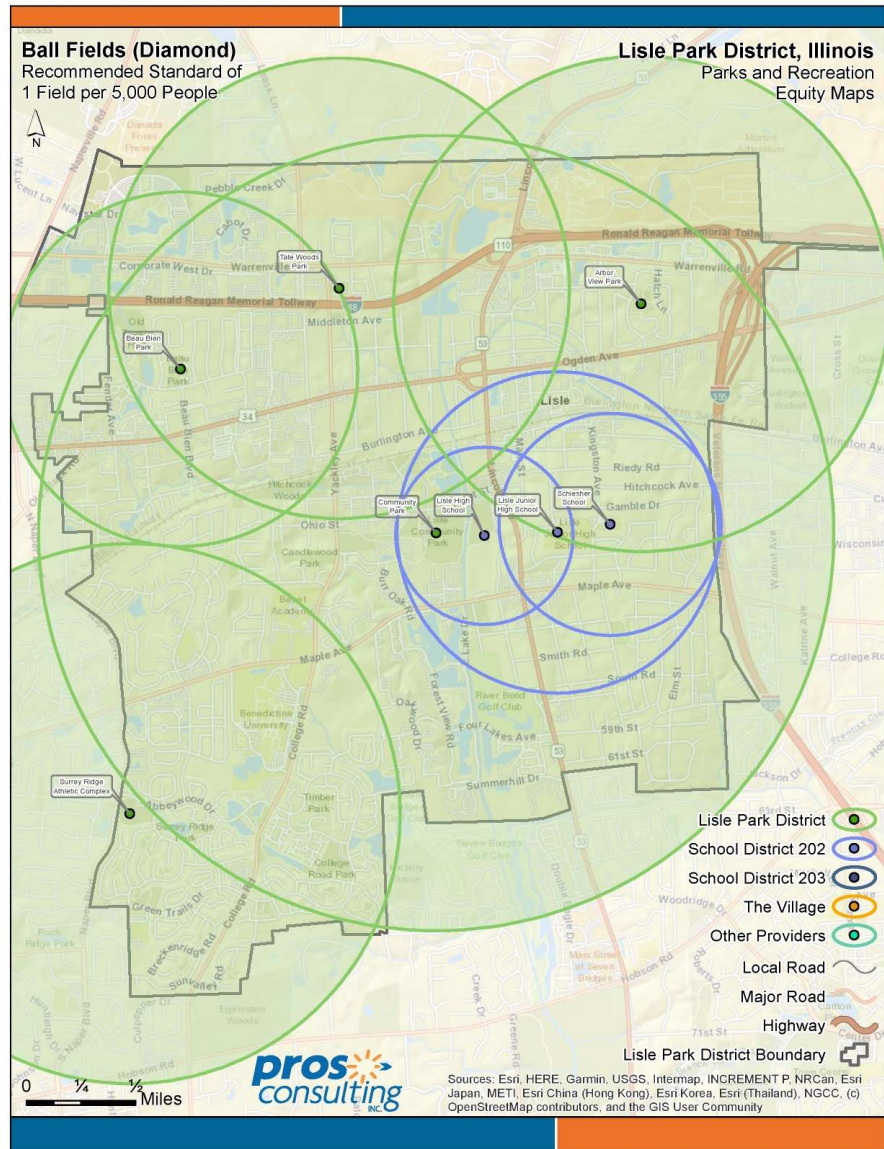
Neighborhood Parks



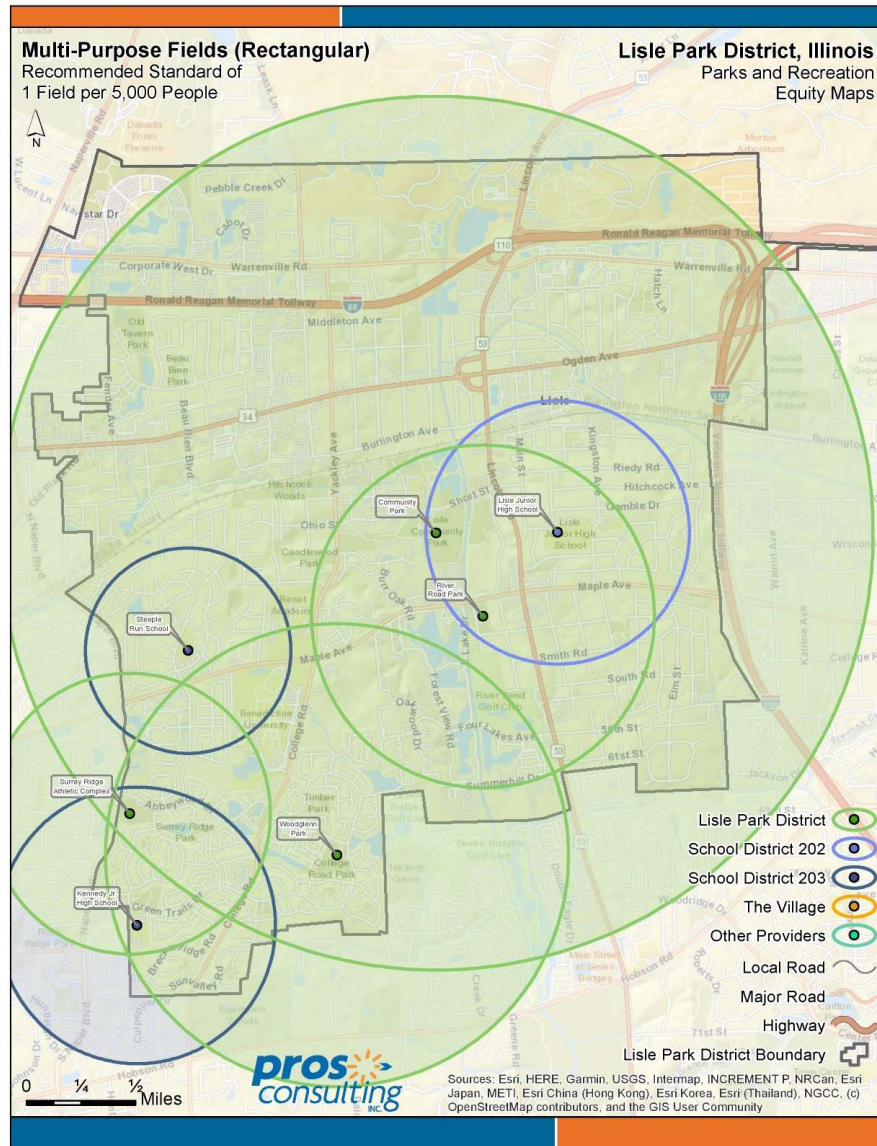
Trails (Paved and Unpaved)



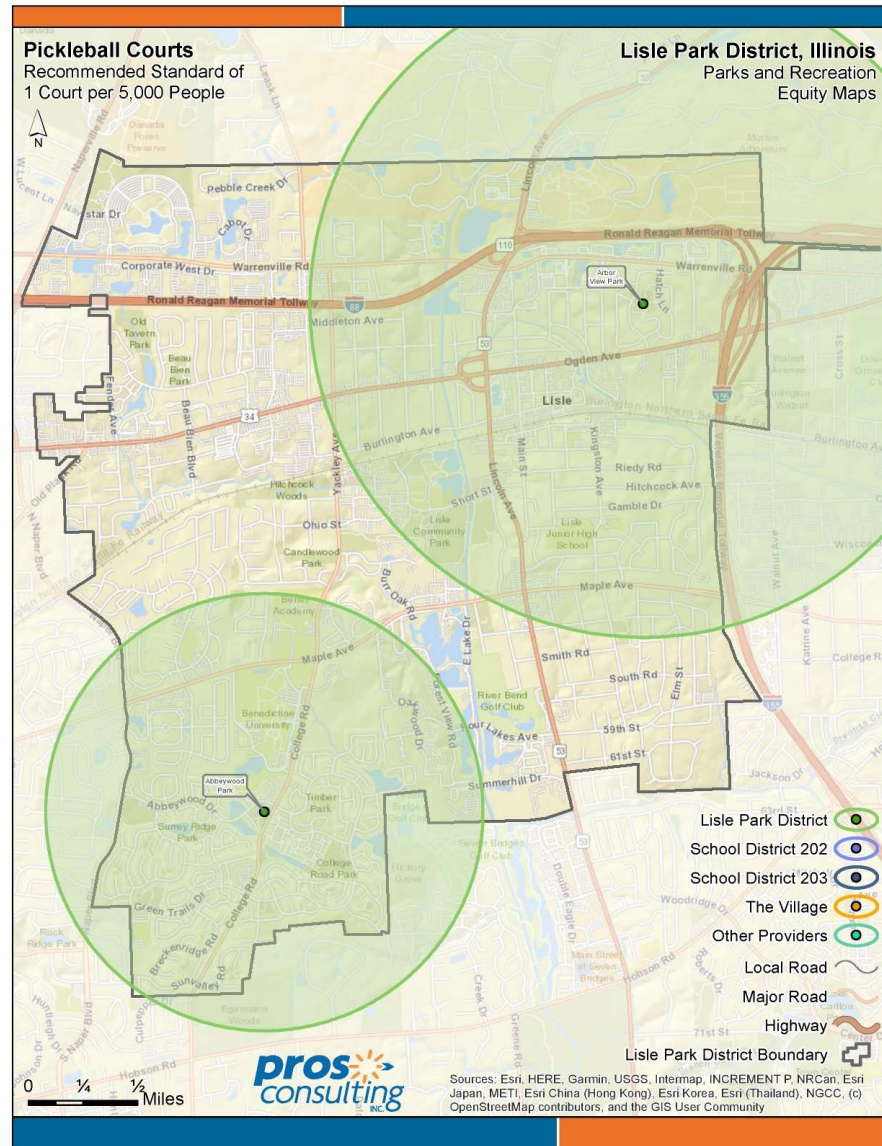
Ball Fields (Diamond)



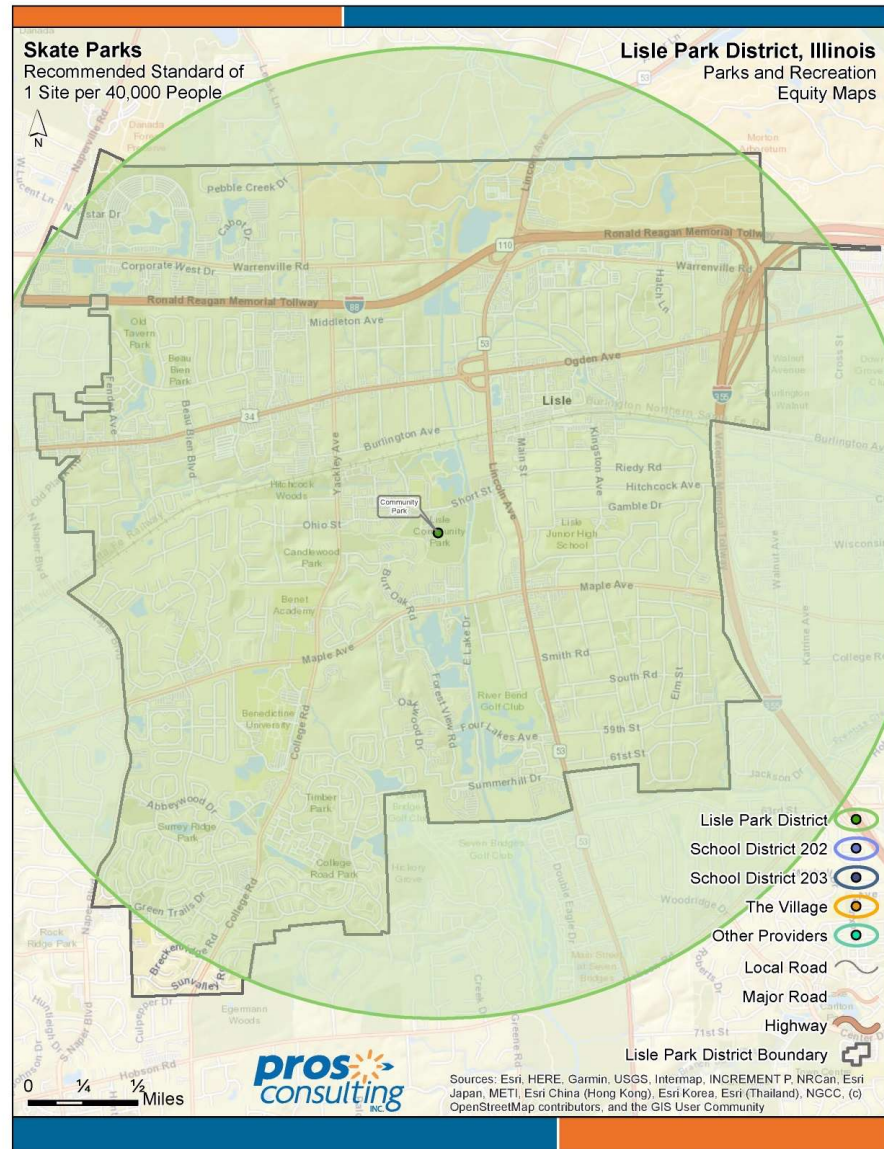
Multi-Purpose Fields (Rectangular)



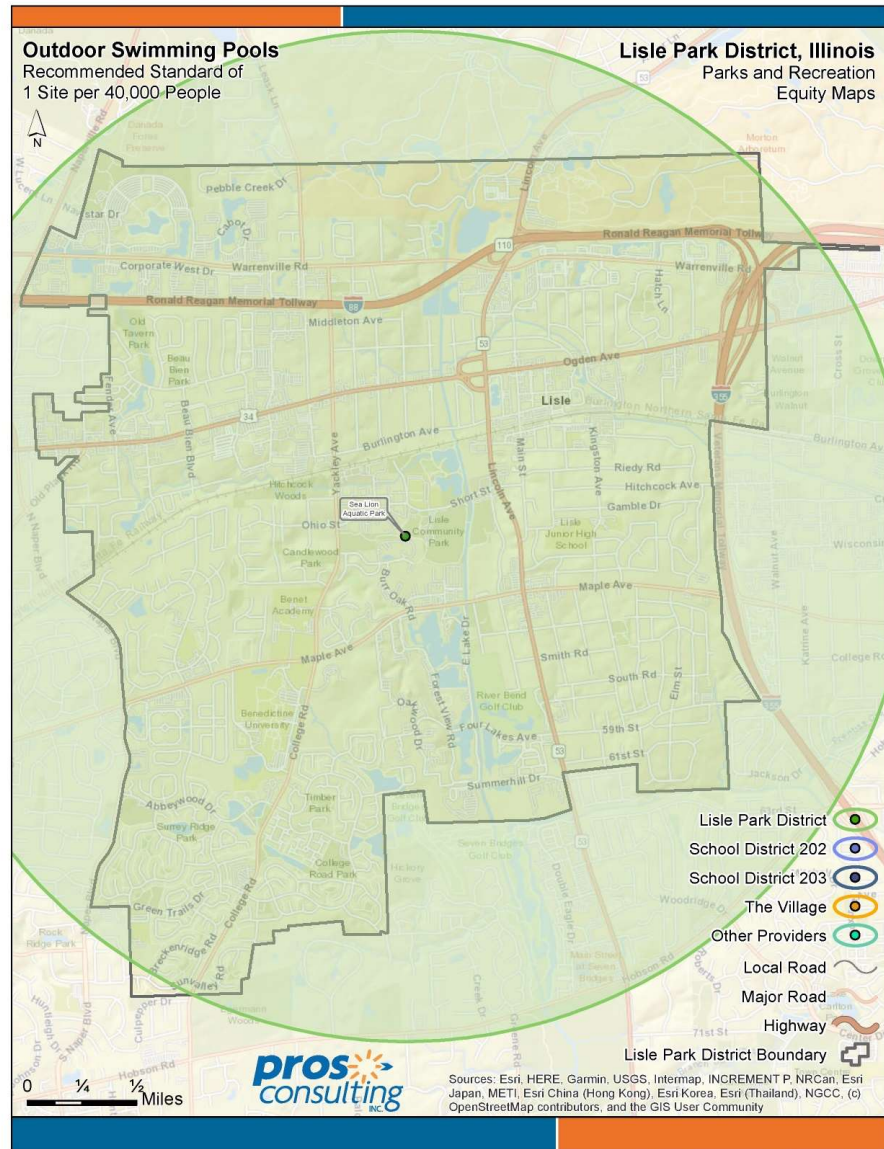
Pickleball Courts



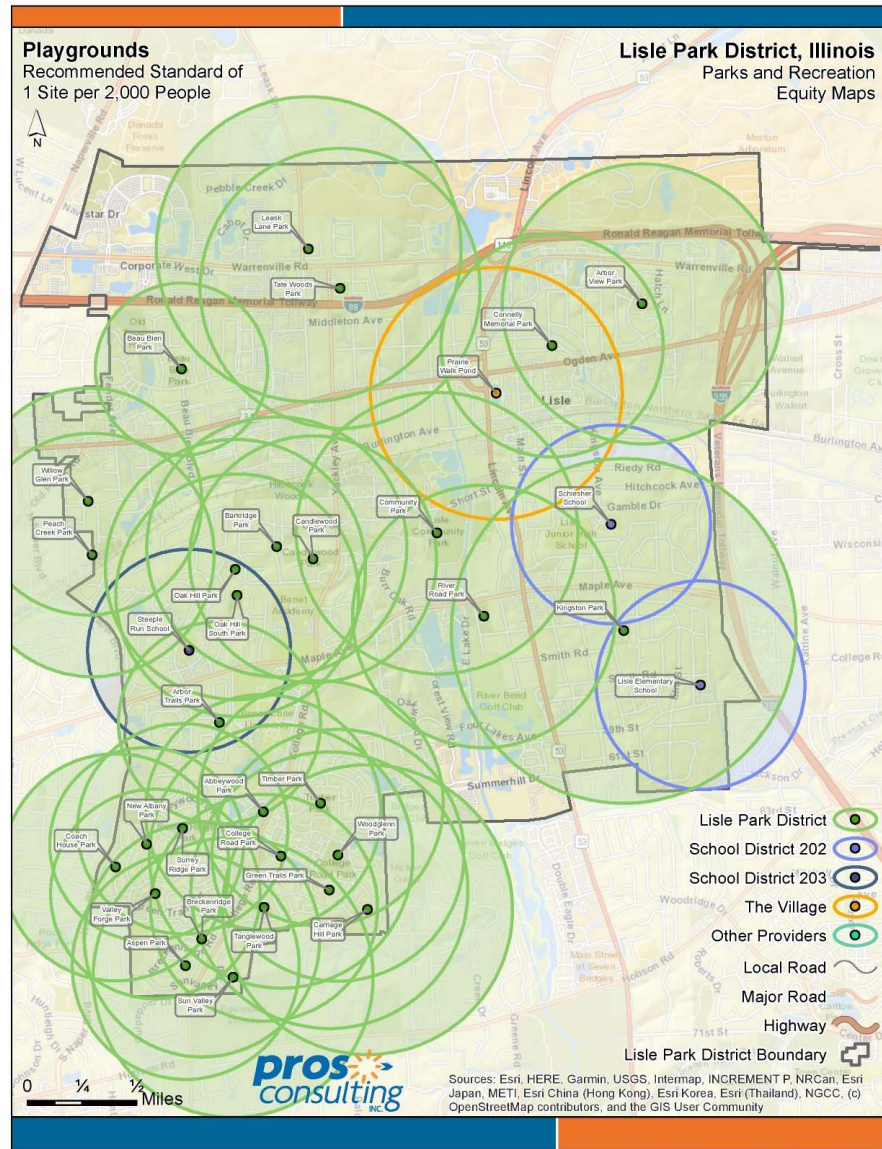
Skate Parks



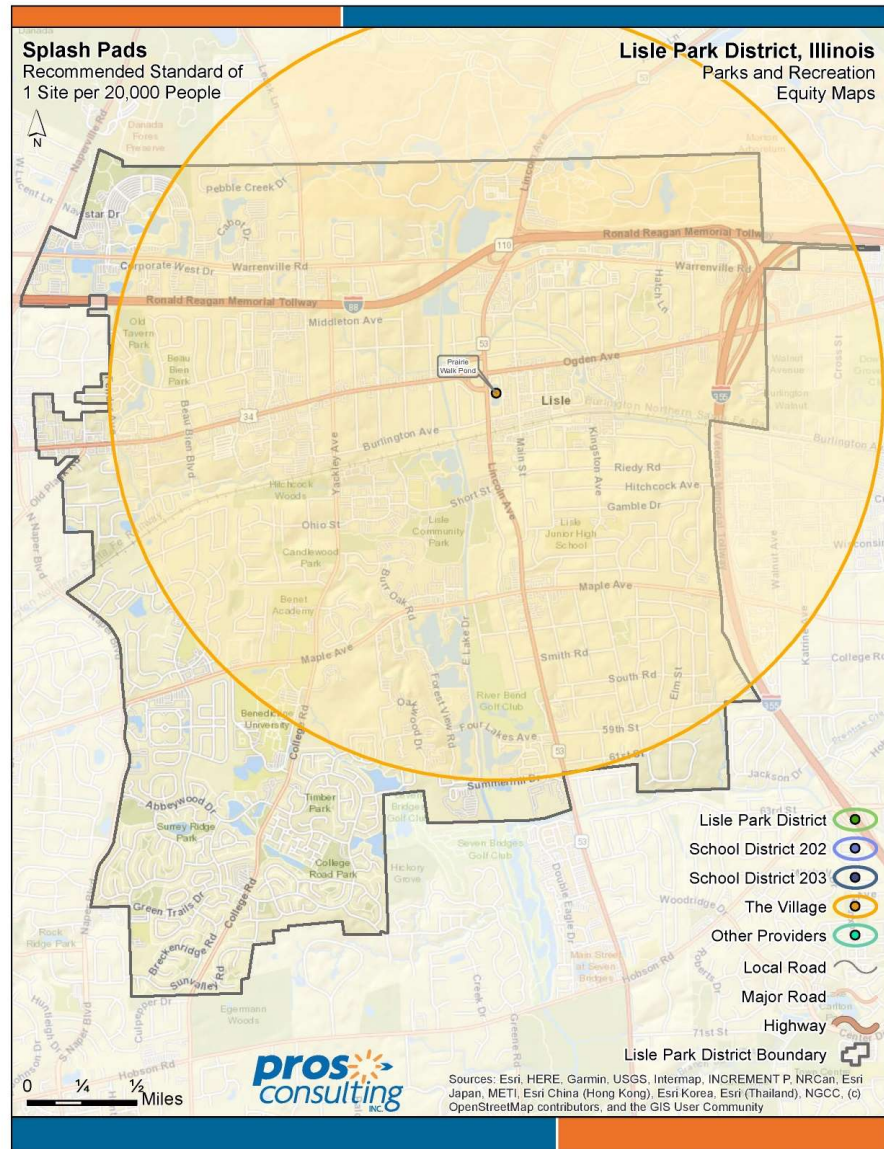
Outdoor Swimming Pools



Playgrounds



Splash Pads





Visioning

Values

1. Inclusion
2. Safety
3. Stewardship
4. Impact

Mission (What Do We Exist To Do?)

Be community focused

Vision (What Do We Want To Be Known For?)

A place
where everyone belongs

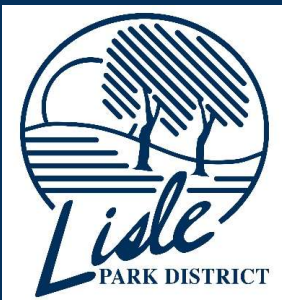
Big Moves

1. Additional indoor, multigenerational recreation space
2. Balance staff recruitment / retention with future staffing models
3. Diversify revenue sources and pass a referendum
4. Greater awareness and storytelling
5. Improve existing parks, trails, programs and amenities

Next Steps

1. Draft Report
2. Board Feedback
3. Final Report

QUESTIONS?



Master Plan Findings & Recommendations

Lisle Park District

